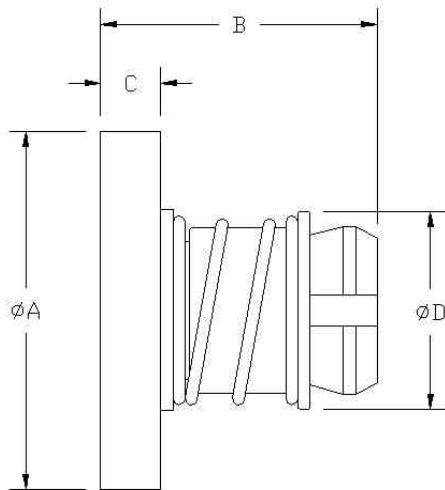


# Anti-backlash Leadnuts

Datasheet v1.2

## Features

- **Anti-backlash/automatic wear compensation:** As the spring pushes the sleeve away from the flange and against the angled end of the main leadnut body, the slotted fingers close on the lead screw. This puts even and constant pressure on the lead screw and results in smooth, low-friction movement with little to no measurable backlash and plenty of automatic wear compensation. As the leadnut wears, the constant pressure from the spring remains, providing backlash resistance throughout the life of the leadnut.
- **Durable:** The high abrasion resistance of the material means these will be long-lasting under stressful conditions.
- **Compact:** Designed and built with minimal space usage in mind. These can't be made much smaller and still retain functionality.
- **Optional flanges:** Standard and custom flanges are available, check [dumpstercnc.com](http://dumpstercnc.com) for details.



**Material:** Delrin® (Quoted from the DuPont website)

Pushing the Limits: Delrin® High Performance Acetal Solutions.

Delrin® bridges the gap between metals and ordinary plastics with a unique combination of strength, stiffness, hardness, dimensional stability, toughness, fatigue resistance, solvent and fuel resistance, abrasion resistance, low wear and low friction.

### Application:

CNC routers, plasma cutters, plotters, robotics or other low-friction linear motion based equipment where high accuracy is needed.

### Lubrication:

Delrin is internally lubricated so extra lubrication is not required unless run at speeds high enough to generate heat, although oil/grease will not hurt them if you choose to use lubrication.

## Available sizes:

All dimensions are in inches unless specified

Thread Form	Part #	Size-TPI	Starts	Turns/ inch	Lead	Dim A	Dim B	Dim C	Dim D <sup>†</sup>
ACME	ABL12101	1/2"-10	1	10	.100	1.50	1.125	.250	.83
	ABL12102	1/2"-10	2	5	.200	1.50	1.125	.250	.83
	ABL12082	1/2"-8	2	4	.250	1.50	1.125	.250	.83
	ABL12105	1/2"-10	5	2	.500	1.50	1.125	.250	.83
	ABL38101	3/8"-10	1	10	.100	1.25	1.10	.250	.63
	ABL38102	3/8"-10	2	5	.200	1.25	1.10	.250	.63
	ABL38121	3/8"-12	1	12	.0833	1.25	1.10	.250	.63
UN	ABL14161	1/4"-16	1	16	.0625	1.00	.92	.200	.53
	ABL12201U	1/2"-20	1	20	.050	1.50	1.125	.250	.83
	ABL38161U	3/8"-16	1	16	.0625	1.25	1.10	.250	.63
Metric	ABL14201U	1/4"-20	1	20	.050	1.00	.92	.200	.53
	METR10151-LN	M10x1.5	1		1.5mm	31.75mm	28mm	6.35mm	16mm
	METR06011-LN	M6x1	1		1mm	25.4mm	22.9mm	4.5mm	13.5mm
Trapezoidal	TRAP12031-LN	M12x3	1		3mm	38mm	28.5mm	6.35mm	21.5mm

<sup>†</sup> Dim D is the maximum dimension, shown for clearance purposes.

## Storage:

If these leadnuts are stored apart from the lead screw, the included wooden plug should be installed to prevent the fingers on the end of the leadnut from closing in. If stored for a long period of time, it is a good idea to remove the spring.

