

# dumpsterCNC, LLC

anti-backlash solutions for home and industrial linear motion  
<http://www.dumpstercnc.com>

## Thread Clamps

TC Datasheet v1.2

A sturdy anti-backlash solution for bearings or anything else you need precisely located on a lead screw.

### Features:

- **Reduces backlash:** Capturing two opposing bearings between two thread clamps will remove the backlash associated with mounting the leadscrew.
- **Durable:** The high abrasion resistance of the material means these will be long-lasting under stressful conditions.
- **Compact:** Designed and built with minimal space usage in mind
- **Non-marring:** These will not damage the leadscrew like set screw type clamps.
- **Vibration resistance:** These clamps will not vibrate loose.
- **Bearing shoulder:** Dims C & D in the below sketch denotes the shoulder that contacts the bearing allowing the thread clamp body to clear the bearing body.

**Material:** Black Acetal Delrin® (Quoted from the DuPont website)

Pushing the Limits: Delrin® High Performance Acetal Solutions.

Delrin® bridges the gap between metals and ordinary plastics with a unique combination of strength, stiffness, hardness, dimensional stability, toughness, fatigue resistance, solvent and fuel resistance, abrasion resistance, low wear and low friction.



### Instruction for use:

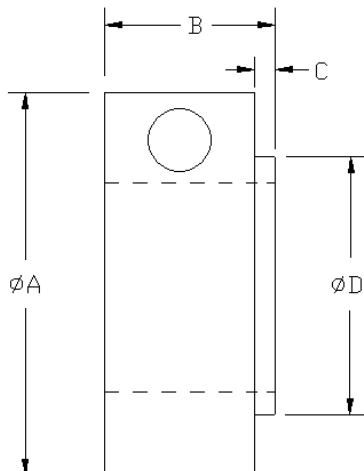
Simply screw these clamps onto your leadscrew and up against your bearings, tighten the 4-40 screw about 1 turn past snug. Do not over tighten; a little torque will clamp these on really tight.

### Application:

CNC routers, plasma cutters, plotters, robotics or other linear motion based equipment where high accuracy is needed.

### Lubrication:

Not required.



**Thread forms available:** ACME – UN – Metric – Trapezoidal

Body Size	Thread Size	Dim A	Dim B	Dim C	Dim D
Size `A`	1/4" & M6	.740	.325	.025	.450
Size `B`	3/8" & M10	.850	.375	.025	.550
Size `C`	1/2" & M12	.950	.375	.025	.650
Size `D`	5/8" & M16	1.075	.425	.025	.750

All dimensions are in inches unless specified